

Operating Your System With the MX-880



**COMPLETE
CONTROL**™

Universal Remote Control®

*This remote control was
Custom Programmed for you by:*

.....
For questions about your Custom Programming call:

.....
Custom Programming of a complex home theater and/or a multi-room system is one of the most challenging tasks within an audio/video installation. It involves an intimate knowledge of how the components interact and exact details on the proper sequences of control.

Only a Complete Control dealer has the requisite experience and training to quickly and effectively customize a remote control for true automated operation.

Congratulations on your choice!

*MX-880 Owners Manual © 2008 Universal Remote Control, Inc.
Front Cover Photo courtesy of Robert Ridenour of Connected Technologies,
www.connected-technologies.com*

The information in this manual is copyright protected. No part of this manual may be copied or reproduced in any form without prior written consent from Universal Remote Control, Inc.

UNIVERSAL REMOTE CONTROL, INC. SHALL NOT BE LIABLE FOR OPERATIONAL, TECHNICAL OR EDITORIAL ERRORS/OMISSIONS MADE IN THIS MANUAL.

The information in this manual may be subject to change without prior notice.

*Complete Control is a registered trademark of Universal Remote Control, Inc.
Entertainment Made Simple is a trademark of Universal Remote Control, Inc.*

All other brand or product names are trademarks or registered trademarks of their respective companies or organizations.

Printed in Korea

 **Universal Remote Control**

*Universal Remote Control, Inc.
500 Mamaroneck Avenue, Harrison, NY 10528
Phone: (914) 835-4484 Fax: (914) 835-4532*

Introduction	1
Optional RF “No Rules” Operation	2
Installing and Charging the Battery	3
Programming the MX-880	4
Selecting a New “Activity”	5
Using the MX-880 to Control an “Activity”	6
Accessing the MX-880’s Setup Menus	7
Selecting from the Setup Menus	8
Setting the Color Screen	8
Setting the Button Lighting	9
System Menu	10
Setting the Button Beep Volume	11
Date and Time Menus	12
Erasing and Resetting	13
USA Limited Warranty Statement	13
Specifications	14
Contact Us	14

Congratulations!

You've purchased a unique synthesis of hardware and software engineering, the Complete Control MX-880. The MX-880 achieves a magnificent combination of power and flexibility, simplifying and automating operation of even the most complex system.

User Configurable Screen and Button Lighting

A built in pick up sensor can be set to light the screen and/or the buttons automatically. Additionally, a dedicated LIGHT button enables the user to backlight the buttons if the pick up sensor is turned off.

Integrated Sound Signaling

The MX-880 incorporates a small speaker for beeps. Anytime you press a button, the MX-880 signals that it has understood your command with a beep sound.

Custom Labeled Buttons

When you pick up the MX-880, it automatically lights up the color LCD screen which labels the six buttons to either side of the screen. These button labels change based on what you are watching or listening to. Thus, if you have selected Watch TV, you will see a list of buttons that are useful to that activity, while if you select Watch DVD, the buttons will control the DVD.



LIGHT Button

Press the Light button on the side of the MX-880 to back-light all of the buttons. Of course, you could opt to set the buttons to light automatically via the pick up sensor.

Optional RF “No Rules” Operation

In combination with a Complete Control RF Base Station, the MX-880 can control your system without being in line-of-sight of the equipment.

To preserve good operation always utilize a Narrow Band RF Base Station with RF Addressing. RF Addressing gives you the ability to control equipment locations throughout your home, even if they are concealed in other rooms or are behind closed doors.

1. The MX-880 sends radio waves in every direction, so you don't have to point the remote anymore!



2. The RFX-250 RF Sensor can be freely positioned for optimal reception.



3. The MRF-350's built-in Front Blaster sends commands to components in the same cabinet space as the MRF-350.



4. Self-adhesive “Flashers” affix to the Infrared sensors on the front panels of your components. The Flashers relay commands to components out of sight of the MRF-350's Front Blaster. The flashers plug in to the MRF-350's rear flasher line outputs via their 10 foot cables. Uniquely, the MRF-350 can also connect to components with rear panel IR Inputs via its adjustable IR Line Outputs.

Installing and Charging the Battery

Open the battery cover by pressing on the release clip and removing the cover.



Note that the three contacts on the battery must connect to the three spring-loaded contacts in the MX-880. Angle the battery into the battery compartment, contacts first, then gently fit the rear of the battery into the compartment as well. Replace the battery cover by inserting the hinged end in first, then snapping the cover back into place.



You can charge the Lithium Ion battery by simply plugging the included charger into the base of the remote as shown here.

The MX-880 can be used while charging.



Programming the MX-880

The MX-880 is programmed via a Windows PC equipped with a USB port (programming cable included), using our proprietary software, MX-880 Editor.

To fully automate an audio/video system the programmer must have a detailed knowledge of each component and how the system is connected and operated. We highly recommend that you use a professional audio/video installer to program your MX-880 so you will be able to enjoy all the benefits of the MX-880.

Selecting a New “Activity”

The MX-880’s WATCH and LISTEN buttons display the activities you can control with your MX-880. When you want to watch something else (a DVD movie, a videotape or an HDTV broadcast), simply press the WATCH button and select the new activity. When you want to listen to the radio or to a CD, touch the LISTEN button and select what you would like to listen to.

Your installer will have programmed the button you pressed to totally configure your system to watch or listen to whatever you selected. Now, the screen will change, and all of the LCD buttons will be reconfigured to give you full control of your system while watching or listening to your selection!

When you press the LISTEN button, you can see the most frequently used activities you have for listening in your system.

When you press the WATCH button, you can see the most frequently used activities you have for watching the sources in your system.



PAGE DISPLAY

At the bottom of the LCD screen, the page display informs you if there are other pages of buttons available.



Press either of the PAGE buttons to see any other available choices.

Using the MX-880 to Control an “Activity”

Once you’ve selected a new activity, the MX-880 displays the title of the activity at the top of the screen. Below the title, the LCD displays the customized names of any special features you need for the activity. All the hard buttons of the MX-880 have now changed to functions optimized for this activity.

The Title displays what activity you can control.

Press either of the PAGE buttons to see any other available choices.

The Volume and Mute buttons always control the sound regardless of what screen is displayed.

The transport buttons (Play, Stop, Skip-, Skip+, FF, REW and Pause) operate when the selected activity requires them (for example, if you watch CABLETV with a TiVo type of DVR, these buttons will control the built-in DVR, while if you are watching a DVD, these buttons will control the DVD player).



The LCD button labels describe special features for this activity.

The Channel and Previous Channel buttons will change channels when you have selected an activity like Watch CABLETV or Watch SAT TV .

The 4 way cursor buttons enable you to navigate on screen guides and menus with ease.

The Number keypad will enter numbers for the activity you’ve selected. Thus, for watching Cable TV, you use the number keypad to enter channel numbers, while when listening to CD, the number keypad enters track numbers.

Accessing the MX-880's Setup Menus

The MX-880 has internal setup menus that enable you to change the settings that control your color screen, the button lighting, battery warnings and the clock. To access these settings, you must press and hold two buttons at the same time as shown here:



At the same time, press and hold both the WATCH button and the ENTER button. When the SETUP screen appears, you can release the two buttons.

Selecting from the Setup Menu

There are two pages of settings on the Setup Menu. Use the page buttons to view them. To select, simply press the corresponding button.



Select the setting you'd like to adjust by pressing the button beside the screen.

Use the Page button to see other pages.

Exit the Setup Menus by pressing the WATCH or LISTEN button, or simply waiting (the setup menus time out in 30 seconds).

Setting the Color Screen

Although usage of the color screen will affect how frequently you have to charge the battery, the screen does not drain the battery as quickly as the button lighting does.



Adjust the brightness of the screen to taste. In most lighting conditions, 50% gives good results.

The Pick Up sensor senses motion, so it will keep the screen on (and drain your battery charge) as long as you are holding it in your hand. If you turn off the Pick Up sensor you will extend battery life (the screen will still light up when you press any button).

Adjust how long the screen stays lit after you put it down or stop using it here.

Setting Brightness

Use the buttons next to DIM and BRIGHT to adjust the brightness. You'll see the screen dim and brighten. When you have the right setting, press SAVE. Pressing Cancel discards all changes.

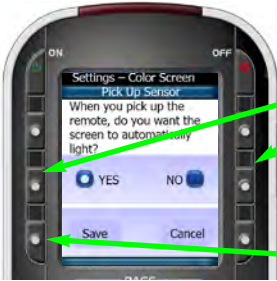


Use the DIM and BRIGHT buttons to adjust the lighting of the color screen.

Press the SAVE button to save your setting.

Setting the Screen Pick Up Sensor

Use the buttons next to YES and NO. If you say YES, the color screen will light as long as you are moving the MX-880. If you say NO, the screen will light when you press any button.

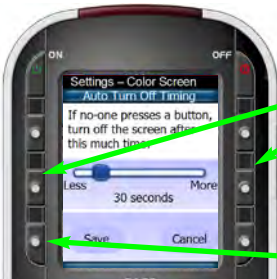


Use the YES and NO buttons to set the Pick Up sensor.

Press the SAVE button to save your setting.

Setting the Screen Auto Turn Off

Use the buttons next to LESS and MORE to adjust the amount of time the screen will stay lit when you stop moving it (Pick Up Sensor ON) or when you stop pressing buttons (Pick Up Sensor OFF).



Use the LESS and MORE buttons to set the Auto Turn Off timing.

Press the SAVE button to save your setting.

Setting the Button Lighting

Note that button backlighting uses more battery charge than the screen. So if you would like to extend the time between charges, lower the usage of button lighting.

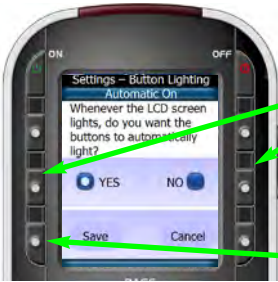


If you turn off Automatic On you will extend battery life (the buttons will still light up when you press the light button).

The buttons will stay lit for so many seconds after you stop pressing buttons. Adjust to your preference by pressing this button.

Setting Button Lighting Automatic On

Use the buttons next to YES and NO. If you say YES, the buttons will light whenever the LCD screen is on. If you say NO, the buttons will only light when you press the LIGHT button.

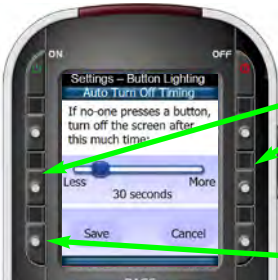


Use the YES and NO buttons to set the button back lighting to automatically turn on or not.

Press the SAVE button to save your setting.

Setting the Button Lighting Auto Turn Off

Use the buttons next to LESS and MORE to adjust the amount of time the buttons will stay lit when you stop moving it (Pick Up Sensor ON) or when you stop pressing buttons (Pick Up Sensor OFF).



Use the LESS and MORE buttons to set the Auto Turn Off timing.

Press the SAVE button to save your setting.

System Menu

While you are using the MX-880 you can get a more accurate reading of the exact power remaining by checking the System Menu. Additionally, the System Info page offers a look at how much memory you have used.



Select Power Remaining to check your power remaining or to set a new battery warning level.

To view the system info, press here.

Power Remaining and Battery Warning Settings

On this screen, you can see how much battery charge remains and you can reset the “Low Battery” warning to either 10, 20 or 30 percent. The battery indicator at the top left of the MX-880 screen will flash when your low battery warning level is reached.



Note the current remaining battery charge here.

Use the LESS and MORE buttons to set the battery warning.

Press the SAVE button to save your setting.

System Info

See how much memory you’ve used on this screen.



You cannot make any changes to the data displayed on this screen. It is informational only.

Press the OK button to exit.

Setting the Button Beep Volume

Use the buttons next to OFF and LOUDEST to adjust how loud the beeps are.



Use the OFF and LOUDEST buttons to set the Beep volume.

Press the SAVE button to save your setting.

Date and Time Menus

Via the three menus for Date and Time you can set the date, set the time and opt to display either the date or the time.

Setting Time

Tap the button beside hour or minutes then use the number keys to enter the correct time. Set the AM/PM by toggling the button. When the time is correct, press the SAVE button.



Select the field you'd like to change, then use the Number buttons on the MX-880 to enter hours or minutes.

Press this button to change AM to PM or PM to AM. Each press changes the setting. When it is correct, press SAVE.

Press the SAVE button to save your setting.

Setting Date

Tap the button beside day, month or year then use the number keys to enter the correct date. When the date is correct, press the SAVE button.

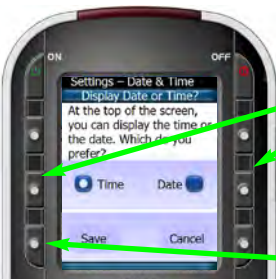


Select the field you'd like to change, then use the Number buttons on the MX-880 to enter the year, the month and the day.

Press the SAVE button to save your setting.

Setting Display for Time or Date

The MX-880 can display either the time or the date, not both. Select what you would like to be displayed and press SAVE.

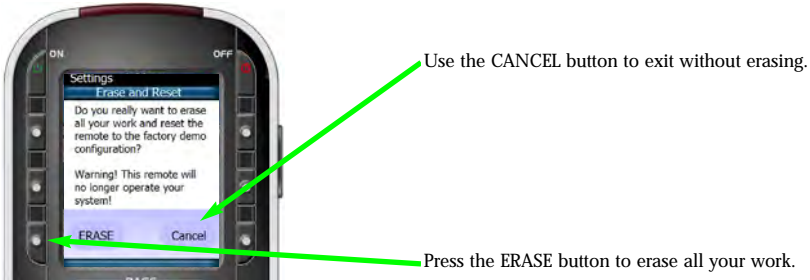


Select either Time or Date display.

Press the SAVE button to save your setting.

Erasing and Resetting

You can erase your MX-880 (all of your work, all devices, all activities will be lost) and reset it to the factory default configuration.



USA Limited Warranty Statement

Your Universal Remote Control, when delivered to you in new condition, is warranted against defects in materials or workmanship as follows: UNIVERSAL REMOTE CONTROL, INC. warrants this product against defects in material or workmanship for a period of one (1) year and as set forth below. Universal Remote Control will, at its sole option, repair the product using new or comparable rebuilt parts, or exchange the product for a comparable new or rebuilt product. In the event of a defect, these are your exclusive remedies.

This Limited Warranty covers only the hardware components packaged with the Product. It does not cover technical assistance for hardware or software usage and it does not cover any software products whether or not contained in the Product; any such software is provided "AS IS" unless expressly provided for in any enclosed software Limited Warranty.

To obtain warranty service, you must deliver the product, freight prepaid, in its original packaging or packaging affording adequate protection to Universal Remote Control at the address provided in the Owner's Manual. It is your responsibility to backup any macro programming, artwork, software or other materials that may have been programmed into your unit. It is likely that such data, software, or other materials will be lost during service and Universal Remote Control will not be responsible for any such damage or loss. A dated purchase receipt, Bill of Sale, Installation Contract or other verifiable Proof of Purchase is required. For product support and other important information visit Universal Remote Control's website: <http://www.UniversalRemoteControl.com> or call the Universal Remote Control Customer Service Center (914) 835-4484.

This Limited Warranty only covers product issues caused by defects in material or workmanship during ordinary consumer use. It does not cover product issues caused by any other reason, including but not limited to product issues due to commercial use, acts of God, third-party installation, misuse, limitations of technology, or modification of or to any part of the Universal Remote Control product. This Limited Warranty does not cover Universal Remote Control products sold as USED, AS IS, REFURBISHED, so-called "B STOCK" or consumables (such as batteries). This Limited Warranty is invalid if the factory-

applied serial number has been altered or removed from the product. This Limited Warranty is valid only in the United States of America. This Limited Warranty specifically excludes products sold by unauthorized resellers.

UNIVERSAL REMOTE CONTROL SHALL NOT BE LIABLE FOR ANY INCIDENTAL OR CONSEQUENTIAL DAMAGES FOR BREACH OF ANY EXPRESS OR IMPLIED WARRANTY OR CONDITION ON THIS PRODUCT. EXCEPT TO THE EXTENT PROHIBITED BY APPLICABLE LAW, THERE IS NO OTHER WARRANTY EXPRESSED OR IMPLIED. UNIVERSAL REMOTE CONTROL WILL NOT BE HELD RESPONSIBLE FOR STATEMENTS MADE BY OTHERS CONCERNING THE MERCHANTABILITY OR FITNESS FOR A PARTICULAR PURPOSE ON THIS PRODUCT. Some states or jurisdictions do not allow the exclusion or limitation of incidental or consequential damages, or allow limitations on how long an implied warranty lasts, so the above limitations or exclusions may not apply to you. This Limited Warranty gives you specific legal rights and you may have other rights which vary from state to state or jurisdiction to jurisdiction.

Specifications

Memory - 32 Megabits of Flash Memory Total (28 Megabits for User Configuration)

Customization Capability - Up to 48 devices and up to 8 pages each for a total of 384 pages.

Learning Capability - Standard frequencies (15kHz to 460kHz)

Macro Capability - Up to 255 steps each

IR Range (Line of Sight via Infrared): 30-50 feet, depending on the environment

RF Range (radio frequency): 50 to 100 feet, depending upon the environment

RF Frequency: 418MHz

Weight: 6.9 ounces (with battery loaded)

Size: 8" H x 2.25" W x 1.25" D

Battery: Lithium Ion rechargeable battery included

Contact Us

Need assistance or have questions?

Our Customer Service Support Center is here to help.

Call (914) 835-4484 to speak with a customer service representative or email us at techsupport@universalremote.com

500 Mamaroneck Avenue, Harrison, NY 10528

Phone: (914) 835-4484 Fax: (914) 835-4532

www.universalremote.com

Your Listen Devices

List any component or device you'd like to access via the Listen menu:

Type of Device (TV, DVD, VCR etc.)	Brand	Model

Your Watch Devices

List any component or device you'd like to access via the Watch menu:

Type of Device (TV, DVD, VCR etc.)	Brand	Model



 Universal Remote Control®

500 Mamaroneck Avenue, Harrison, NY 10528
Phone: (914) 835-4484 Fax: (914) 835-4532
www.universalremote.com