



MAC ACS CLIENT SOFTWARE USER MANUAL

1 MAC ACS USER GUIDE

1.1 System Requirement

Recommended System Requirement

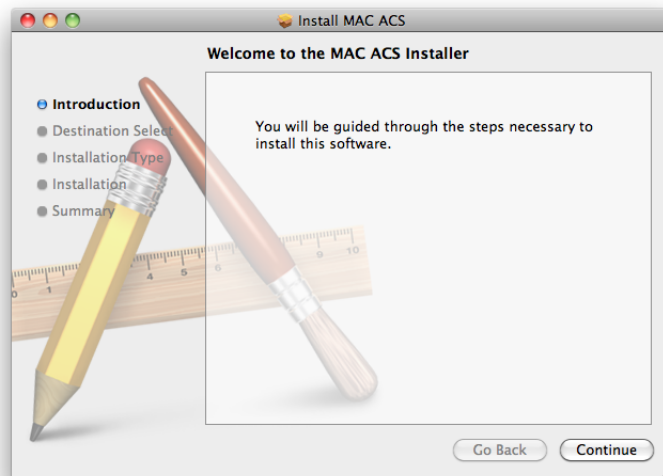
OS	Mac OS X 10.6(snow leopard)
CPU	Built-in Intel CPU MAC
VGA	Recommended More than 128MB
RAM	Recommended More than 1GB
HDD	20MB Free Space

Minimum System Requirement.

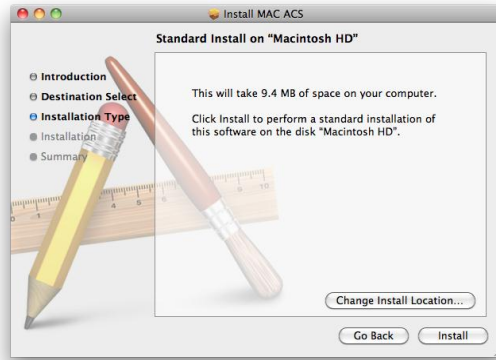
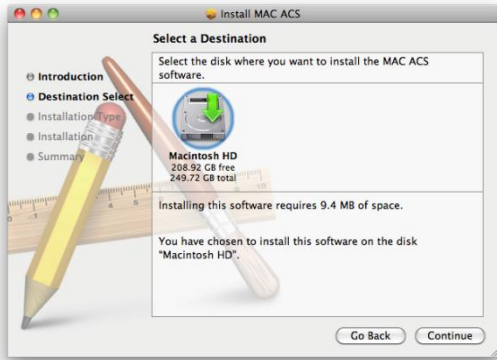
OS	Mac OS X 10.5(Leopard)
CPU	Built-in Intel CPU MAC
VGA	64MB
RAM	512MB
HDD	20 MB Free space

1.2 Install

- a. Run MAC ACS.pkg installed on the CD. A Setup Menu will appear as below. Follow the installation instructions to complete the installation.

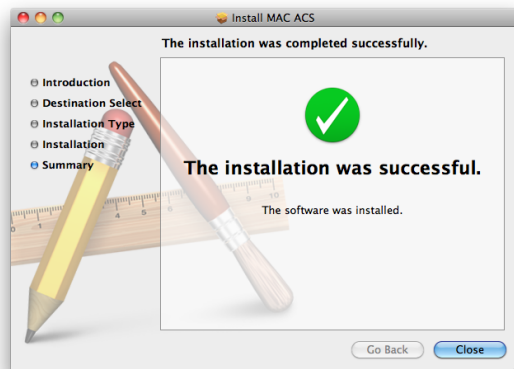
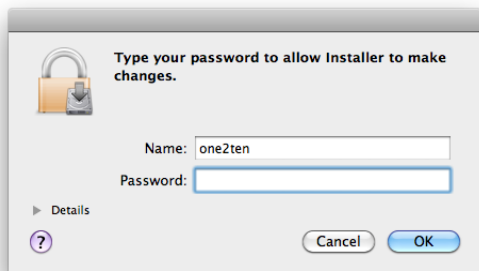


- b. Select the directory where you would like the ACS software to be installed to. Press the [Continue] button to move to the next screen.



- c. Press the [Install] button to Install MAC ACS.

- d. Enter the password and Click [OK] to begin installation. When the installation is complete, the message appears as below.



1.3 Basic Operation

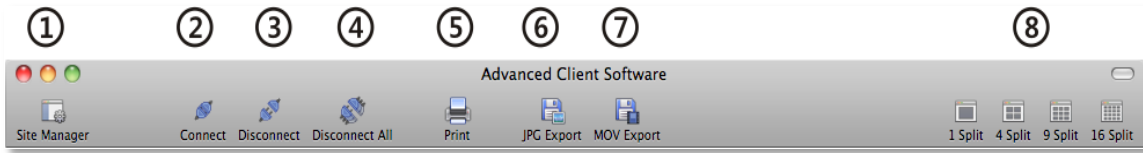
To run the ACS on your MAC, click on ACS icon in Application Folder.



1.3.1 Screen Layout

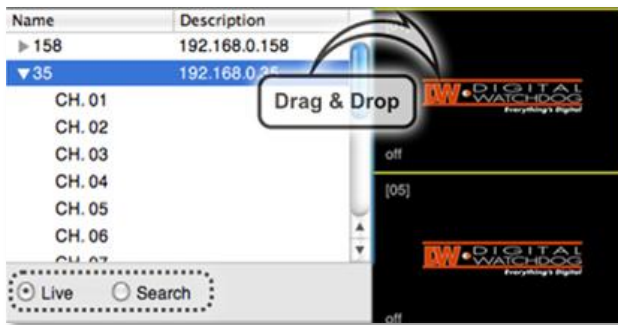


1.3.2 Main Toolbar



No.	Button	Description
1	Site Manager	Register or Delete DVRs
2	Connect	Connect to a selected site from the DVR list panel (Select Live/Search to set the connection mode)
3	Disconnect	Disconnect a selected channel
4	Disconnect All	Disconnect All Channels
5	Print	Print image
6	JPG Export	Save a selected image to the desktop as JPEG format
7	Movie Export	Save a selected video clip to the desktop as mov format
8	Split	Single Channel, 4-Split, 9-Split, 16-Split

1.3.3 Site List Panel

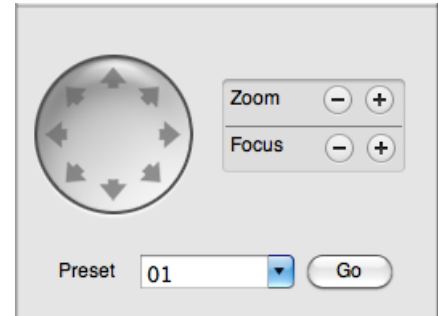


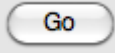
The site list panel shows all registered DVRs. To connect a site, Drag & Drop it to the display area.

Before connecting to a site, select Live or Search from the connection mode panel.

1.3.4 PTZ Panel

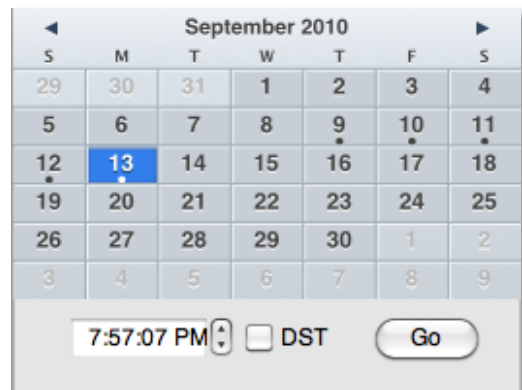
PTZ camera controls in Live Mode. PTZ Camera can control if the channel is activated on PTZ operation.



No.	Button	Description
1	Navigation Key	PTZ camera can be moved in 8 directions.
2	Zoom	Optical Zoom In and Out.
3	Focus	Adjust the focus of PTZ camera.
4	Preset	Select the preset location.
5		Go to the preset location.

1.3.5 Calendar Panel

The calendar is enabled only in Search mode.



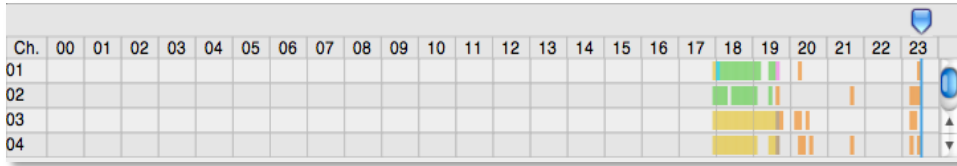
Days with available recorded data will display a small dot under the day's date in the calendar. The selected day will be highlighted in Blue. When you click on a recorded date on the search mode, the playback time will automatically update.

Press the  button to start playback from the selected date and time.

If DST is enabled, the earlier one-hour overlapped video will be shown first.

1.3.6 Search Panel

The Search panel is enabled only in Search mode.



- The Search panel shows the record information for each channel.
- Each color represents a different recording mode:

No Record	Background Color
Continuous	(Yellow Color)
Panic	(Red Color)
Alarm	(Orange Color)
Motion	(Green Color)

- Click the time or move the time to the time you want to playback in the search panel.

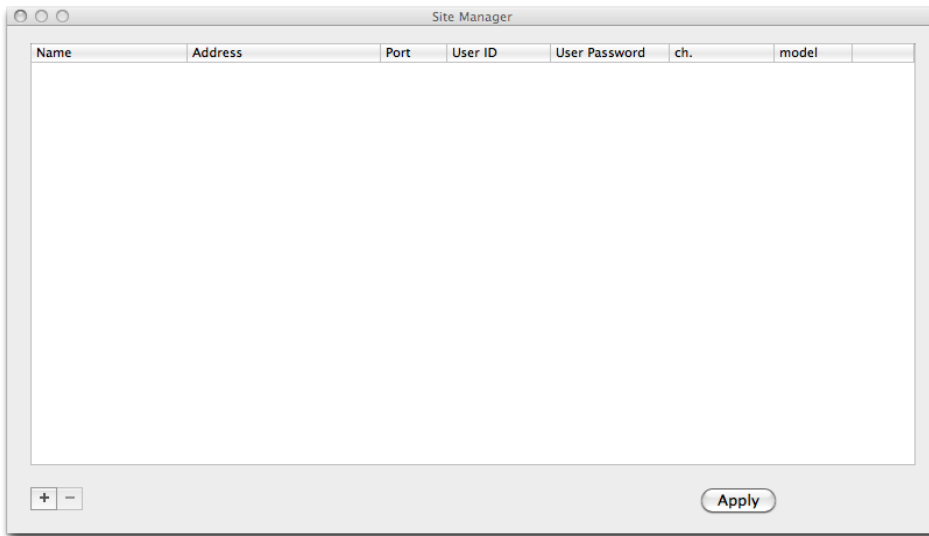
1.3.7 Playback Panel




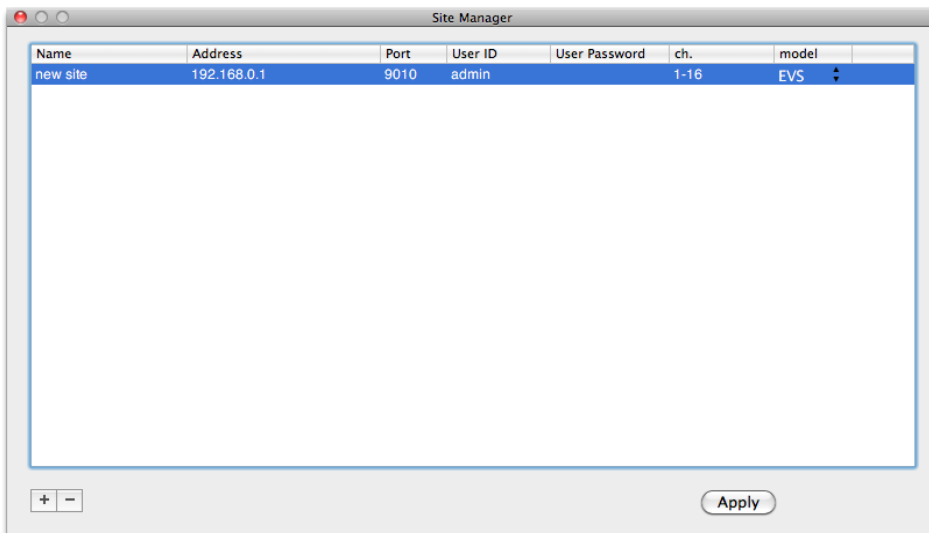
No	Button	Description
1		Go to first
2		Forward Playback : Decrease the Speed Reverse Playback : Increase the Speed
3		Reverse Playback
4		Pause
5		Forward Playback
6		Forward Playback : Increase the speed Reverse Playback : Decrease the speed
7		Go 10 seconds before the end of the data.

1.3.8 Site Manager

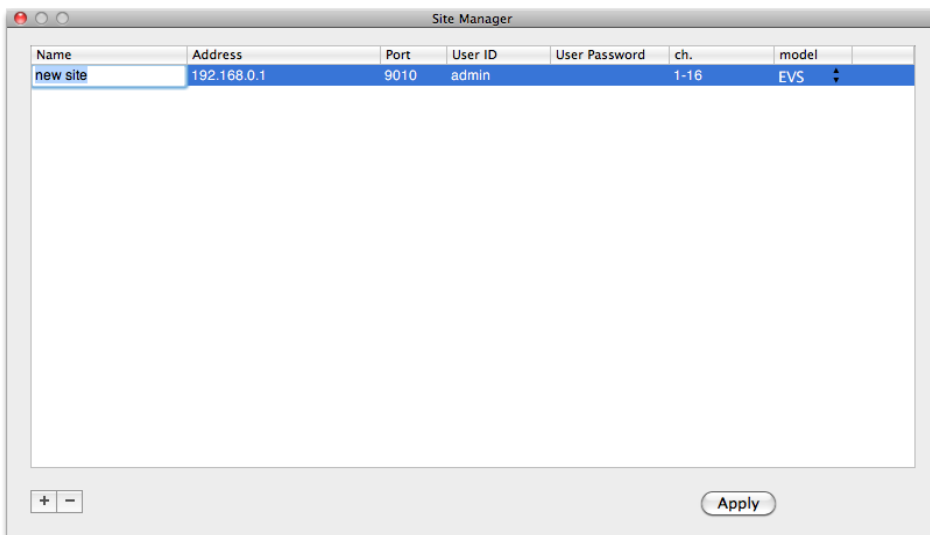
Add, Modify, or Remove DVR site information.



Press  add a DVR entry. The system will fill out the information automatically.




To change the default values, double-click on the item. For example, double-click “ New Site “ to change the name.



After all the necessary modifications have been made, press the  button.

No.	Function	Description
1	Name	Enter a name for the site
2	IP	Enter the IP of the site to be registered
3	Port	Enter the Port number of the site to be registered (Default 9010)
4	User ID	Enter the ID of the DVR to be connected
5	User Password	Enter the PW of the DVR to be connected
6	Ch.	Enter the channels of the site to be registered. For example: 16 Ch DVR: 1-16, individual cameras 1,3,5,7,9...
7	Model	Select Model name of the DVR to be registered

If you want to delete the registered DVR information, Select the DVR and click 

After modifications have been made, press 